



Presbyterians Planting for Wildlife:

An Introduction to NWF's Sacred Grounds Program



Welcome!

**Please Put Your Name and House Of
Worship/Organization in the Chat!**

Tonight's Presenters





Presentation Overview

Introduction to Sacred Grounds

The Importance of Native Plants

Where We've Been: Case Studies

How to Join





Uniting all Americans to
ensure that wildlife and
people thrive in a rapidly
changing world.



National
Wildlife
Federation





ALASKA
NORTHERN ROCKIES,
PRAIRIES, AND PACIFIC



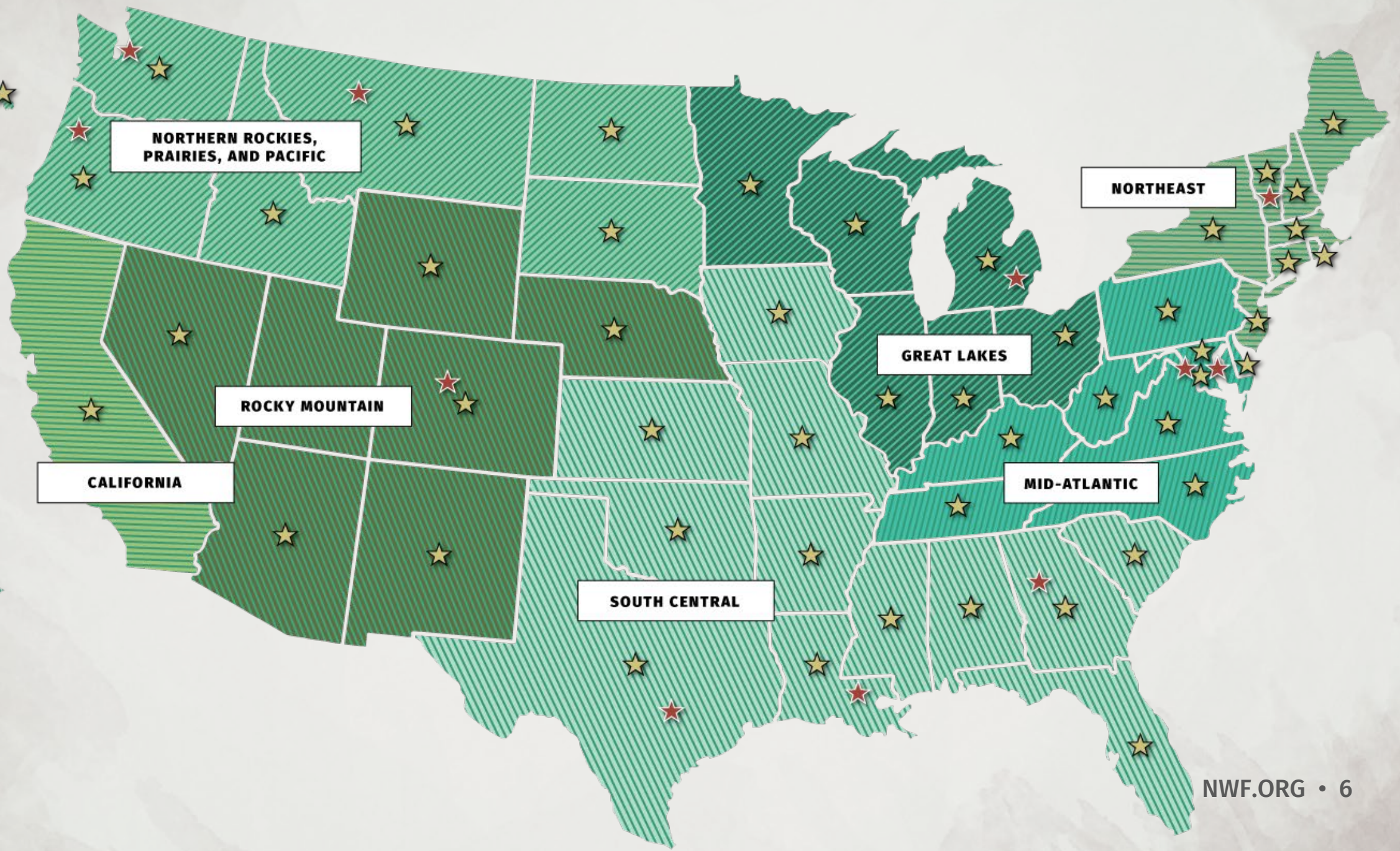
HAWAII
NORTHERN ROCKIES,
PRAIRIES, AND PACIFIC



PUERTO RICO
SOUTH CENTRAL



VIRGIN ISLANDS
SOUTH CENTRAL





What is Sacred Grounds?

Sacred Grounds is a National Wildlife Federation (NWF) program that recognizes congregations, houses of worship, and faith communities that create wildlife habitat and engage their communities around environmental stewardship.





Each congregation will create a unique space for praise and celebration of nature's wonders that connects people and nature.

Where are Sacred Grounds Sites?

Sacred Grounds can be everywhere, but there are specific program groups and project leads across the country:



Great Lakes (Toldeo, Detroit, Grand Rapids, Cleveland)

Mid-Atlantic (Baltimore, Wilmington)

DMV (D.C., Maryland, Virginia)



Who is Eligible?

Identify: Congregations, houses of worship, faith communities, and spiritual organizations

Need: Space on your grounds for a garden, ability to form a green team, funds to install a pollinator garden

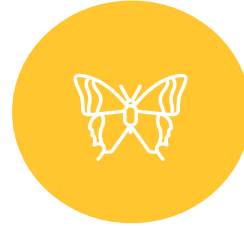
- If your congregation meets the requirements for a specific Sacred Grounds program, you might be able to apply for a mini-grant



Motivating Factors



Increasing wildlife habitat



Providing opportunities for people to connect to nature



Creating a safe, peaceful neighborhood greenspace for prayer and reflection



Fulfilling faith's call to stewardship



Building resilient communities





Benefits of Community Green Space

Social

Health

Economic

Environmental





Native Plants

WHAT THEY ARE AND WHY THEY'RE IMPORTANT

The Importance of Native Plants



When you plant native plants, you provide habitat and nourishment to wildlife and improve your community at the same time!



The Importance of Native Plants





Oak

557 species of caterpillars


Garden FOR Wildlife[™]
by National Wildlife Federation

[NWF.ORG/GARDEN](https://www.nwf.org/GARDEN)



Ginkgo

0 species of caterpillars

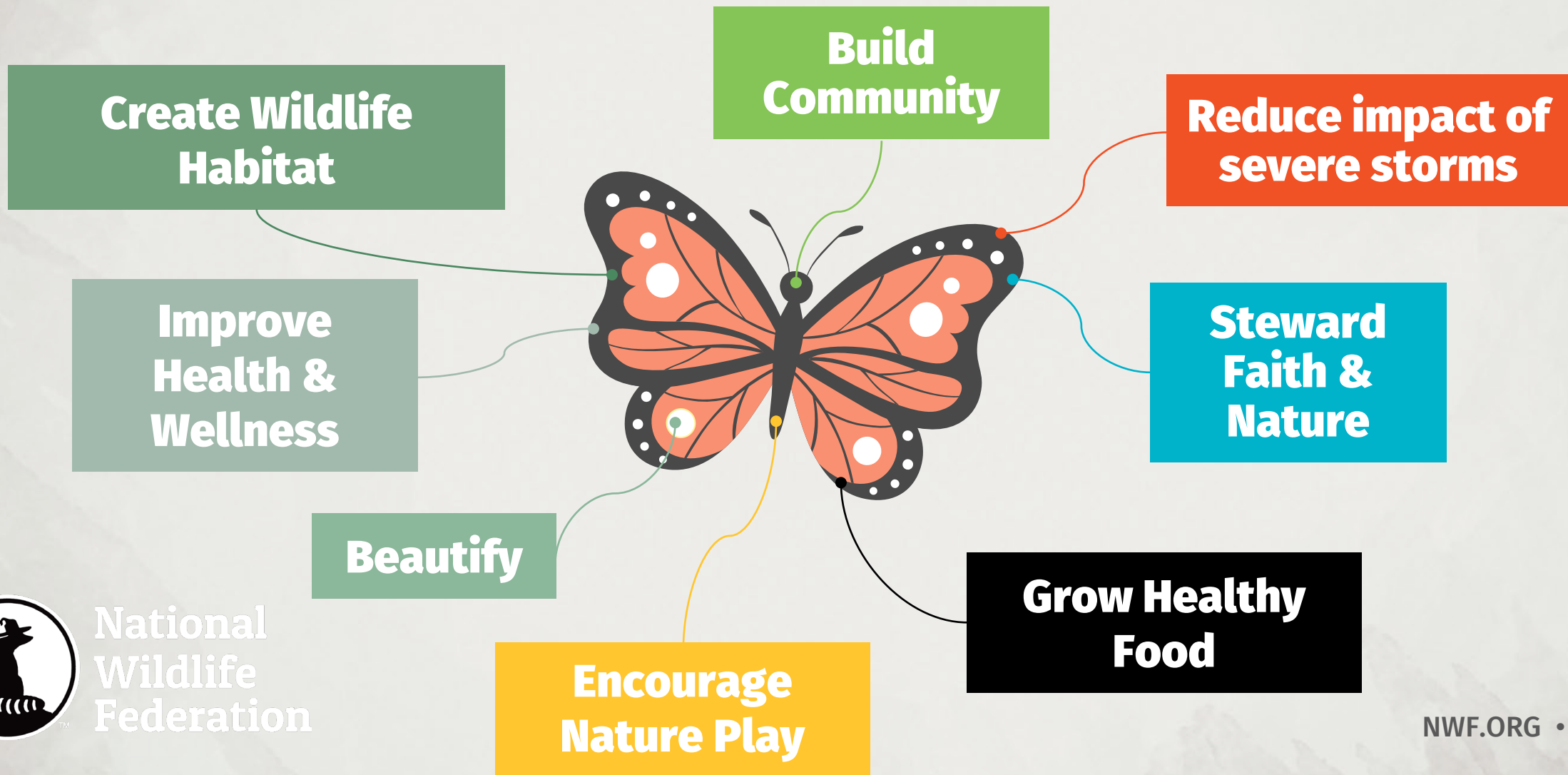

Garden FOR Wildlife™
by National Wildlife Federation

[NWF.ORG/GARDEN](https://www.nwf.org/GARDEN)

96% of backyard birds rely on invertebrates to feed their young



Why Native Plants?



National
Wildlife
Federation



- Adapted to local soils
- Adapted to regional precipitation
- Resilient and hardy once established
- Support wildlife


Garden FOR Wildlife[™]
by National Wildlife Federation

[NWF.ORG/GARDEN](https://www.nwf.org/GARDEN)



Natives, Non-Natives, & Invasives



NATIVE: *Asclepius incarnata*,
Swamp milkweed

Photo Credit: [Tom Potterfield, Flickr](#)
[Creative Commons](#)



NON-NATIVE: *Asclepias curassavica*, Tropical milkweed

Photo Credit: [Renee Owns](#)



INVASIVE: *Buddleja davidii*,
Butterfly bush

Photo credit: [Leslie J. Mehrhoff, University of Connecticut](#), [Bugwood.org](#)



Wildlife need native plants

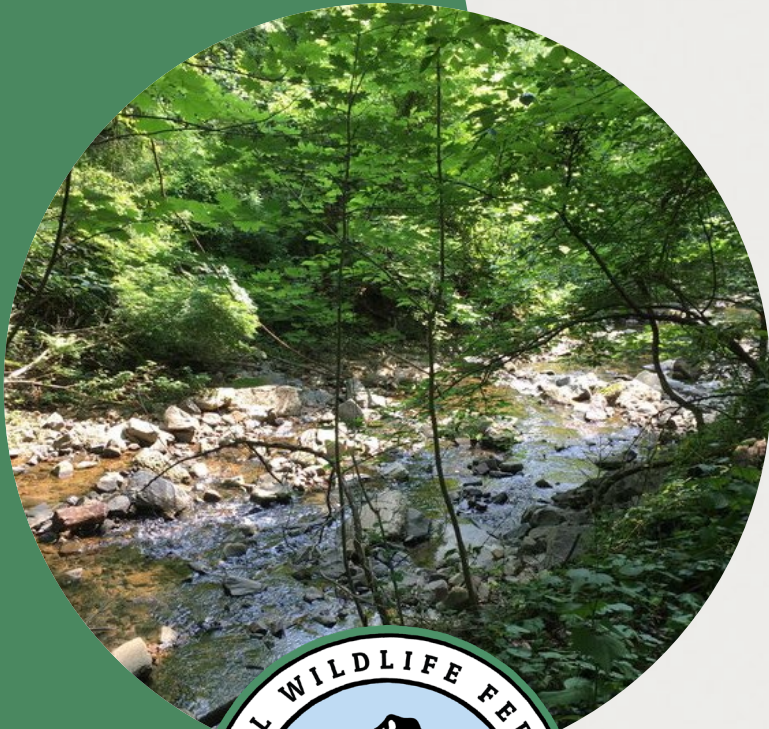
The definition of gardening is
the act of ...

*Planting with a
Purpose!*



Native Plants Resources

- Native Plant Finder:
<https://www.nwf.org/nativeplantfinder/>
- Homegrown National Park:
<https://homegrownnationalpark.org/>
- Keystone Plants:
<https://www.nwf.org/Garden-for-Wildlife/About/Native-Plants/keystone-plants-by-ecoregion>



Case Studies

THE SUCCESSES OF OTHER CONGREGATIONS

Presbyterian Churches in SG Wilmington



Westminster Presbyterian Church

1502 West 13th Street, Wilmington, DE 19806

“Our vision is to create an outdoor space that would support a variety of church activities.” The space will be used for “individual contemplation as well as spiritual and earth-centered activities” and possibly as an outdoor worship space.

“Turning this area into a Native Plants Garden would create an inviting space for individual prayer and church gatherings, transforming this forgotten plot of land into an asset and spiritual resource.”



Hanover Presbyterian Church/Pacem in Terris

1801 N Jefferson St, Wilmington, DE 19802

Their vision was to create a space that is peaceful, easy to maintain, and create a positive impact on the community/neighborhood.

“Hanover Church has always been a neighborhood centered church, with an emphasis on creating hospitality, a spirit of inclusion and working toward social justice.”

They worked in partnership with Pacem in Terris and Jefferson Street Center, Inc.





Stillmeadow Community Fellowship



Peace Park Goals

- Provide a beautiful and meditative space for the use of the members of the faith community as well as neighbors and visitors.
- Provide habitat for bird, small mammals, and insects by the use of native plantings.
- Provide an educational experience for those who visit on the benefits of onsite management of storm water conservation with a cistern and the use of native plants.



Spring 2022

Worked with Stillmeadow to create a second pollinator garden – the ‘Be Still Meadow’.

Lawn conversion

A Strong Partnership

- USDA Forest Service
- Interfaith Partners for the Chesapeake
- Blue Water Baltimore
- University of Delaware
- The National Audubon Society
- Baltimore Green Space
- Nature Sacred
- National Wildlife Federation
- Turnaround Tuesday
- Maryland Forest Service, Department of Natural Resources
- Baltimore Office of Sustainability
- Baltimore City Department of Public Works
- BUILD





Islamic Community Center of Laurel (ICCL)

Before, During, & After





Dickerson Education Center

Dickerson Education Center





Masjid Bilal of Cleveland

Masjid Bilal of Cleveland



Native plant list included in this garden:

- Black – Eyed Susan
- Broad Leaved Purple Coneflower
- Lanceleaf Coreopsis
- Little Bluestem
- Nodding Wild Onion
- Foxglove
- Butterfly Weed
- Wild Bergamot
- Wild Columbine
- Smooth Blue Aster
- Yellow Coneflower
- Two Red Maple Trees
- Two Redbud Tree
- Arrowwood Verbernum shrub



Get Involved!

HOW TO JOIN SACRED GROUNDS



Sacred Grounds Requirements



- Create wildlife habitat
- Install native plants & form a committed green team to care for them
- Engage your congregation and the surrounding community
- Make connections between faith practices and stewardship

Check out our Sacred Grounds webpage!
<https://www.nwf.org/sacredgrounds>

When you're ready, designate your site as a Sacred Ground!

- Sacred Grounds Designation Form Link: https://nwf.az1.qualtrics.com/jfe/form/SV_bwp30De0nla5by6
- You can receive a free paper PDF of the Sacred Grounds sign or pay a small fee to receive a metal yard sign.





**Thank you for listening! We hope
you feel inspired to Garden for
Wildlife where you worship!**

Reach out to Natalie Cohen with any additional questions:

CohenN@nwf.org



Questions?

