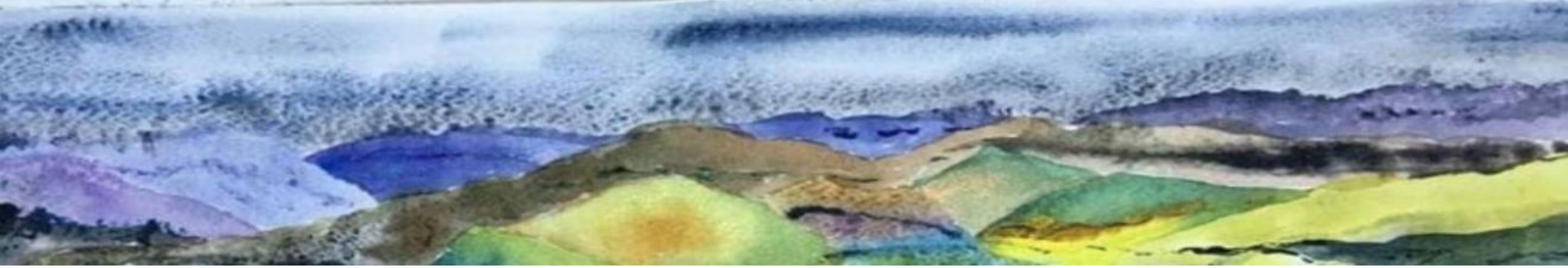


The background is a watercolor painting of a landscape. It features rolling hills in various shades of green, yellow, and blue. In the foreground, there is a small stream or path with some purple and pink flowers. The overall style is soft and artistic.

# The Climate Crisis & Empowering Hope

*Alison Bennett*





# Faithful Banking

Workshop 6

Friday, Sep 22, 2023 10:30 – 11:30

Dan Terpstra

[danterpstramail@gmail.com](mailto:danterpstramail@gmail.com)



# Global Warming's Terrifying New Math

Three simple numbers that add up to global catastrophe - and that make clear who the real enemy is

BY BILL MCKIBBEN

Rolling Stone July 12, 2012

Global Warming's Terrifying New Math





# Fossil Fuel Divestment Overtures

- 2014
- 2016
- 2018
- ~~2020~~

Fossil Fuel  
Die-In 2018



☰ Menu FAITH / SCIENCE / POLITICS / JUSTICE / VIEWPOINTS

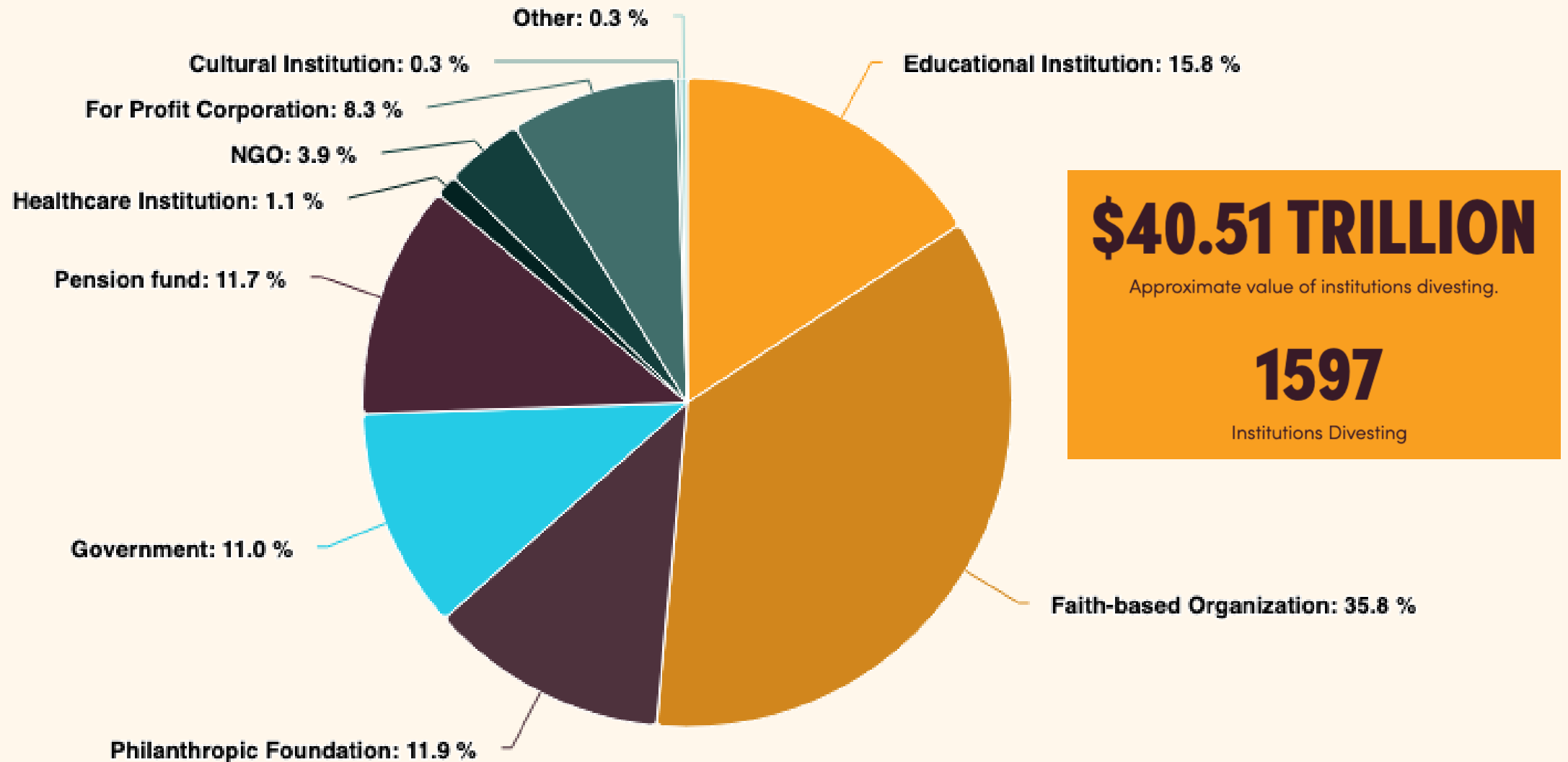
# Presbyterians to divest from 5 oil companies after years of debate

Fossil Fuel  
Divestment

- 2022

Exxon Mobil, Chevron, Marathon Petroleum, Phillips 66 and Valero Energy

# What kinds of institutions are divesting?

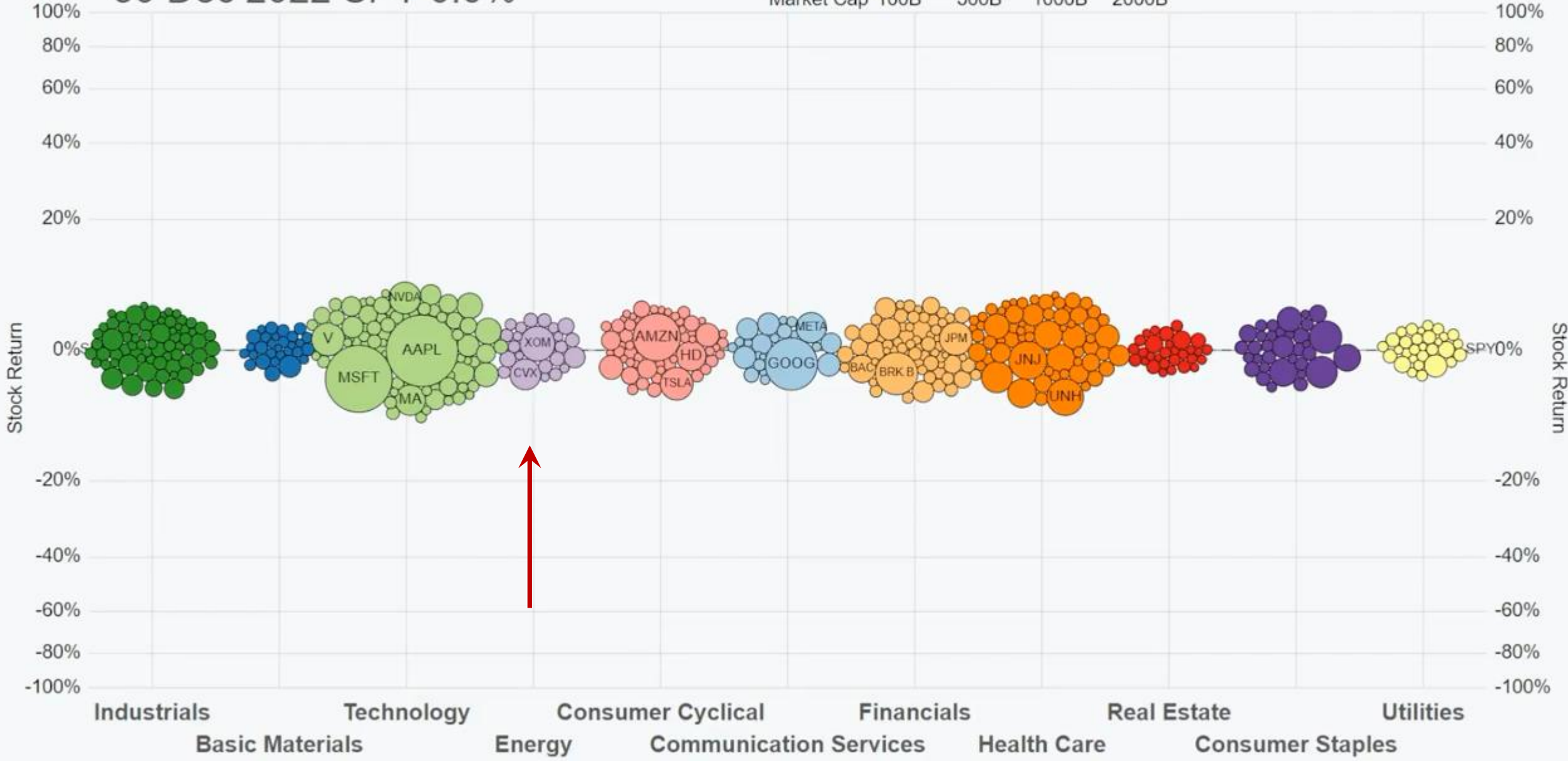


# S&P 500 Q1-2023

30 Dec 2022 SPY 0.0%

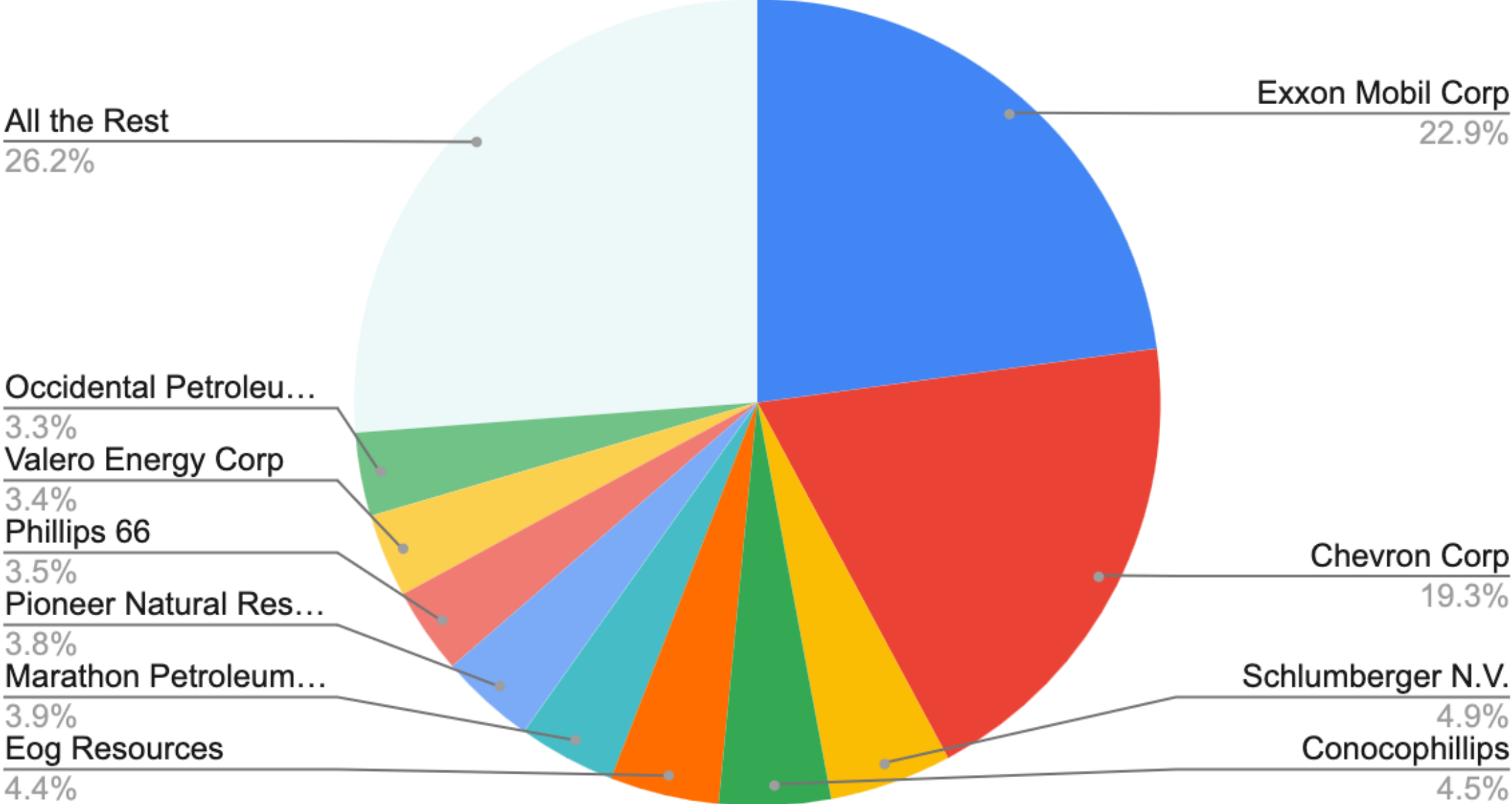
CHARTFLEAU

Market Cap 100B 500B 1000B 2000B



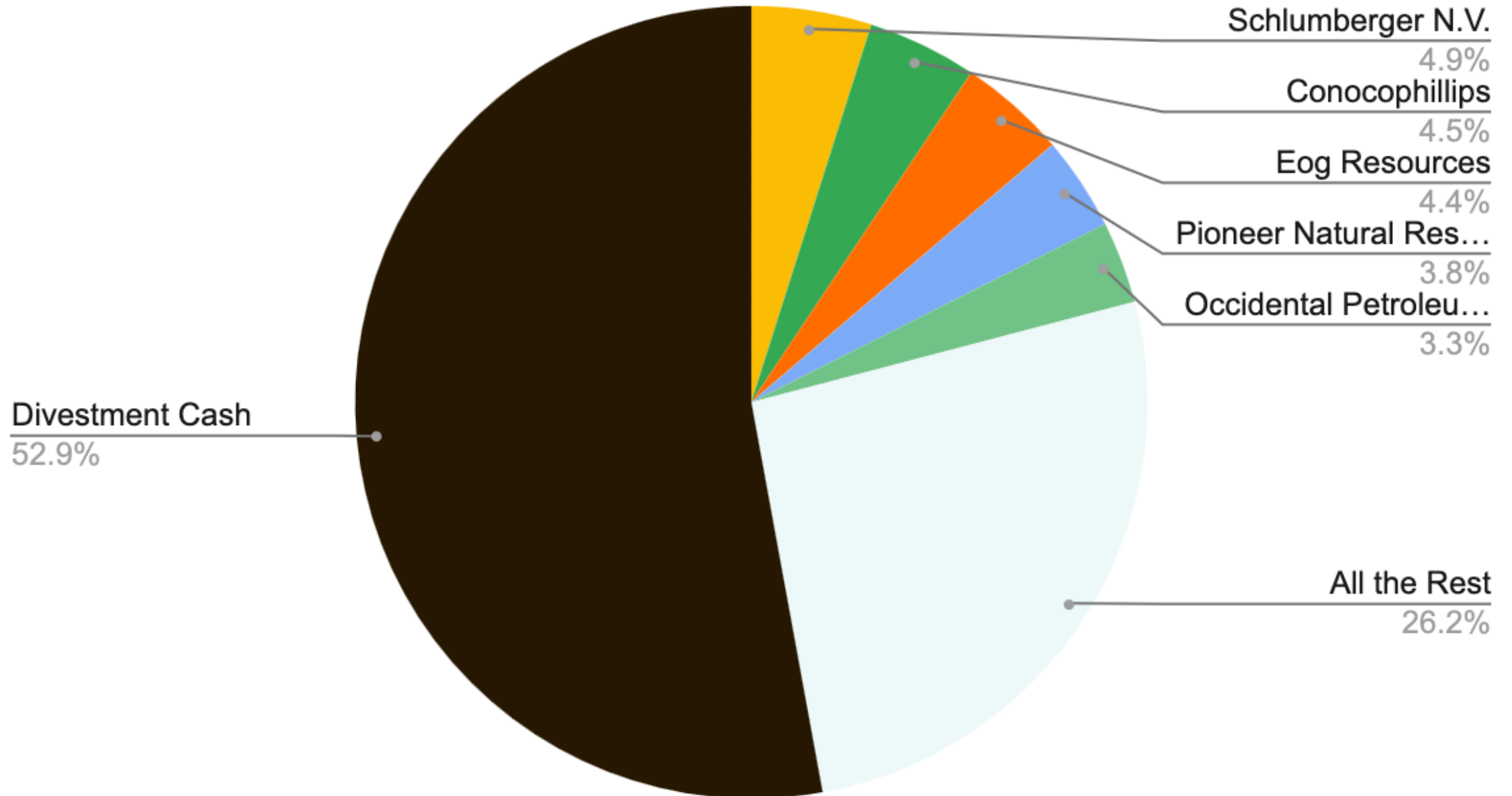


# S&P 500 Energy Sector Q2, 2023

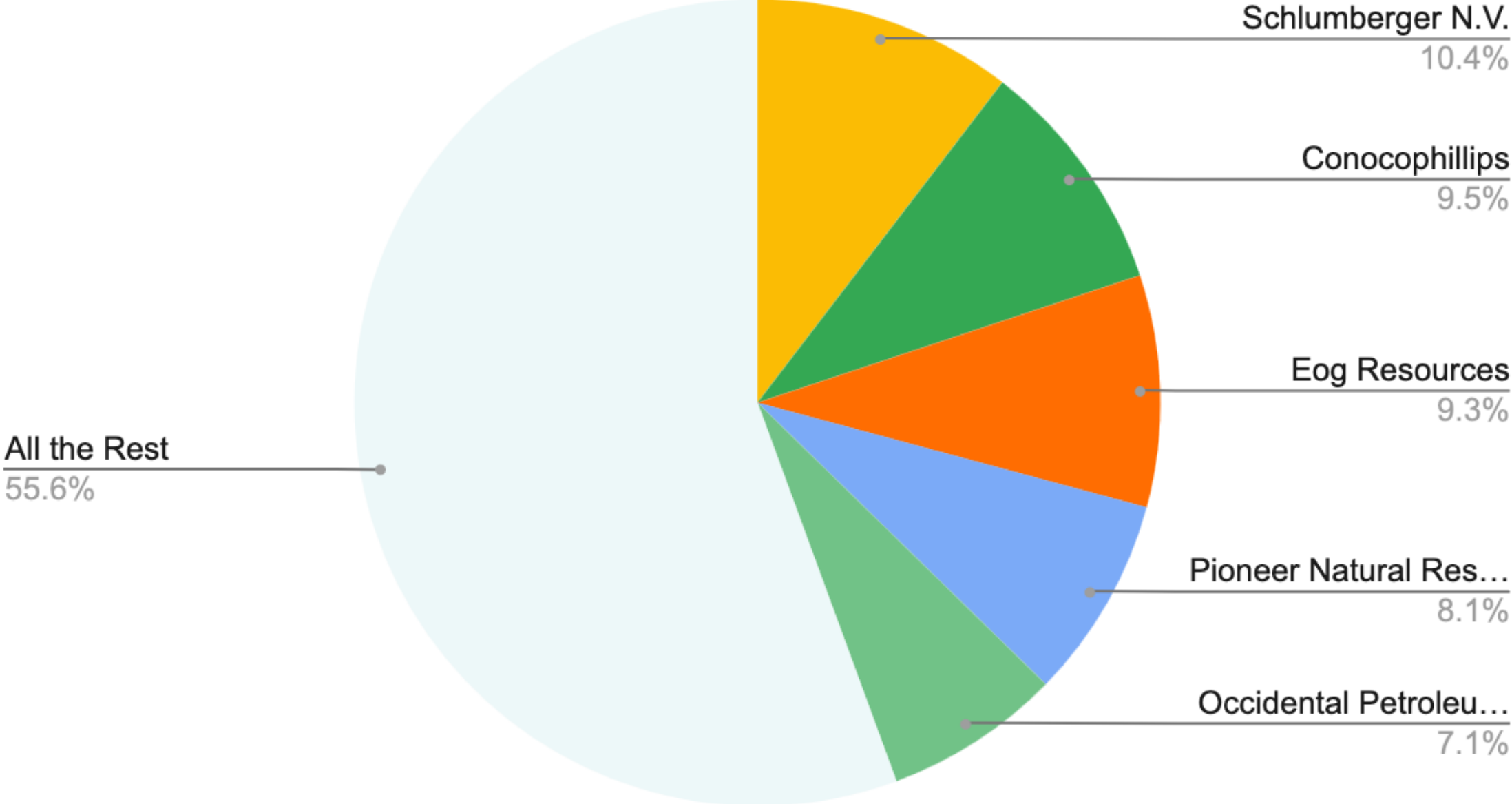




# S&P 500 Energy Sector After Divestment



# S&P 500 Energy Sector After Rebalancing

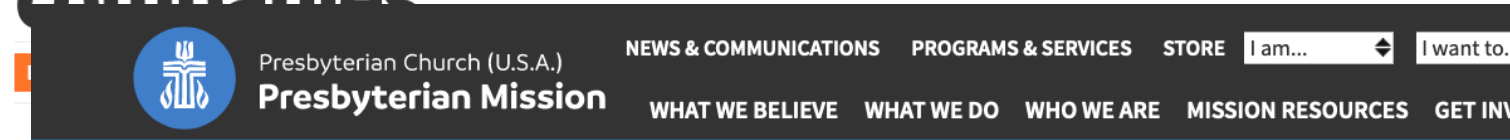


# Now What?



[Home](#) › [Synod of the Northeast](#) calls for immediate divestment from fossil fuel companies

## Synod of the Northeast calls for immediate divestment from fossil fuel companies



[Home](#) › [Climate Justice](#) › National Capital Presbytery Divests from Fossil Fuels. Happy Earth Day!

## National Capital Presbytery Divests from Fossil Fuels. Happy Earth Day!

April 22, 2021



...and then there's bank accounts...





# MONEY IS THE OXYGEN ON WHICH THE FIRE OF GLOBAL WARMING BURNS

Bill McKibben  
New Yorker Sep 17, 2019

*What if the banking, asset-management, and insurance industries moved away from fossil fuels?*



# What do Banks have to do with it?

YOU PROBABLY HAVE SOME OF YOUR MONEY IN A BANK OR USE A BANK-BACKED CREDIT CARD



BANKS USE YOUR MONEY & THE MONEY OF FELLOW DEPOSITORS TO MAKE LOANS TO OTHERS ... INCLUDING



## TRILLIONS OF DOLLARS TO THE FOSSIL FUEL INDUSTRY

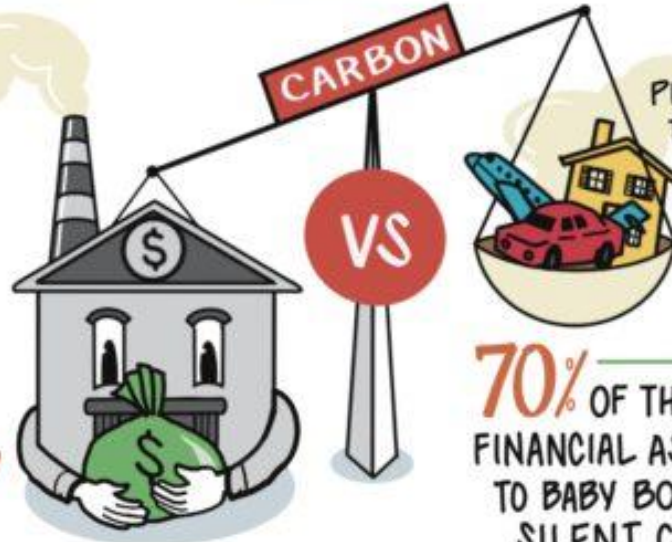
- PIPELINES • FRACKING
- OIL EXTRACTION
- COAL MINING



IF THE FINANCIAL SERVICES INDUSTRY WAS A NATION, IT WOULD BE THE 5<sup>th</sup> BIGGEST EMITTER OF POLLUTION ON EARTH

IF YOU HAVE \$62,500 OF MONEY IN THE MAINSTREAM BANKING SYSTEM\*

\* [www.carbonbankroll.com](http://www.carbonbankroll.com)



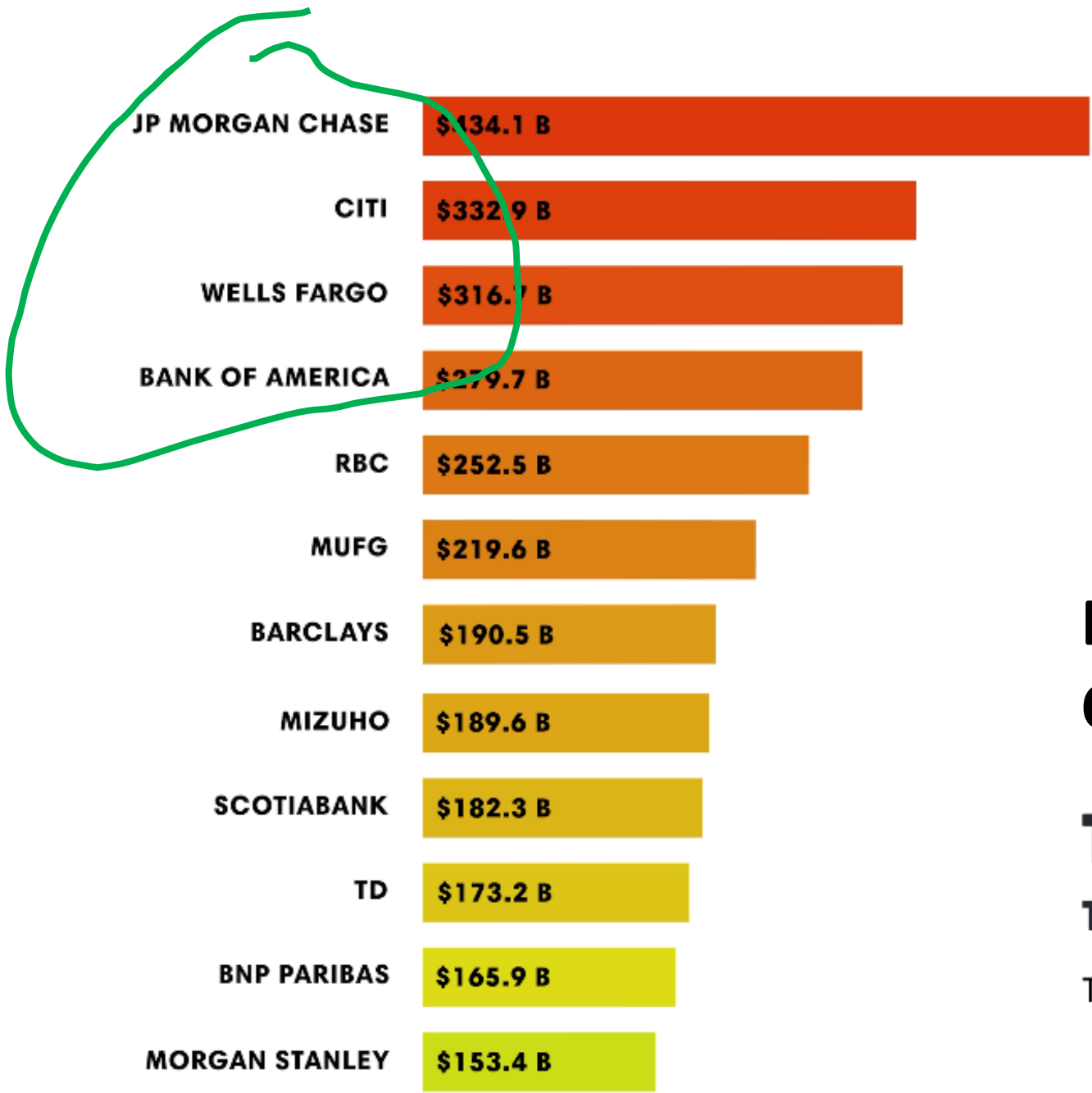
ALL THE CARBON PRODUCING ACTIVITIES OF THE AVERAGE AMERICAN FOR 6 MONTHS

70% OF THE COUNTRY'S FINANCIAL ASSETS BELONG TO BABY BOOMERS & THE SILENT GENERATION



# TOGETHER WE CAN MAKE OUR MONEY GREENER

WE CAN APPLY PRESSURE TO THE BIG BANKS  
— BANK OF AMERICA, CHASE, CITIBANK, & WELLS FARGO —  
TO STOP FINANCING CLIMATE CHAOS.



434 B  
+ 333 B  
+ 317 B  
+ 280 B  


---

\$1.364 T

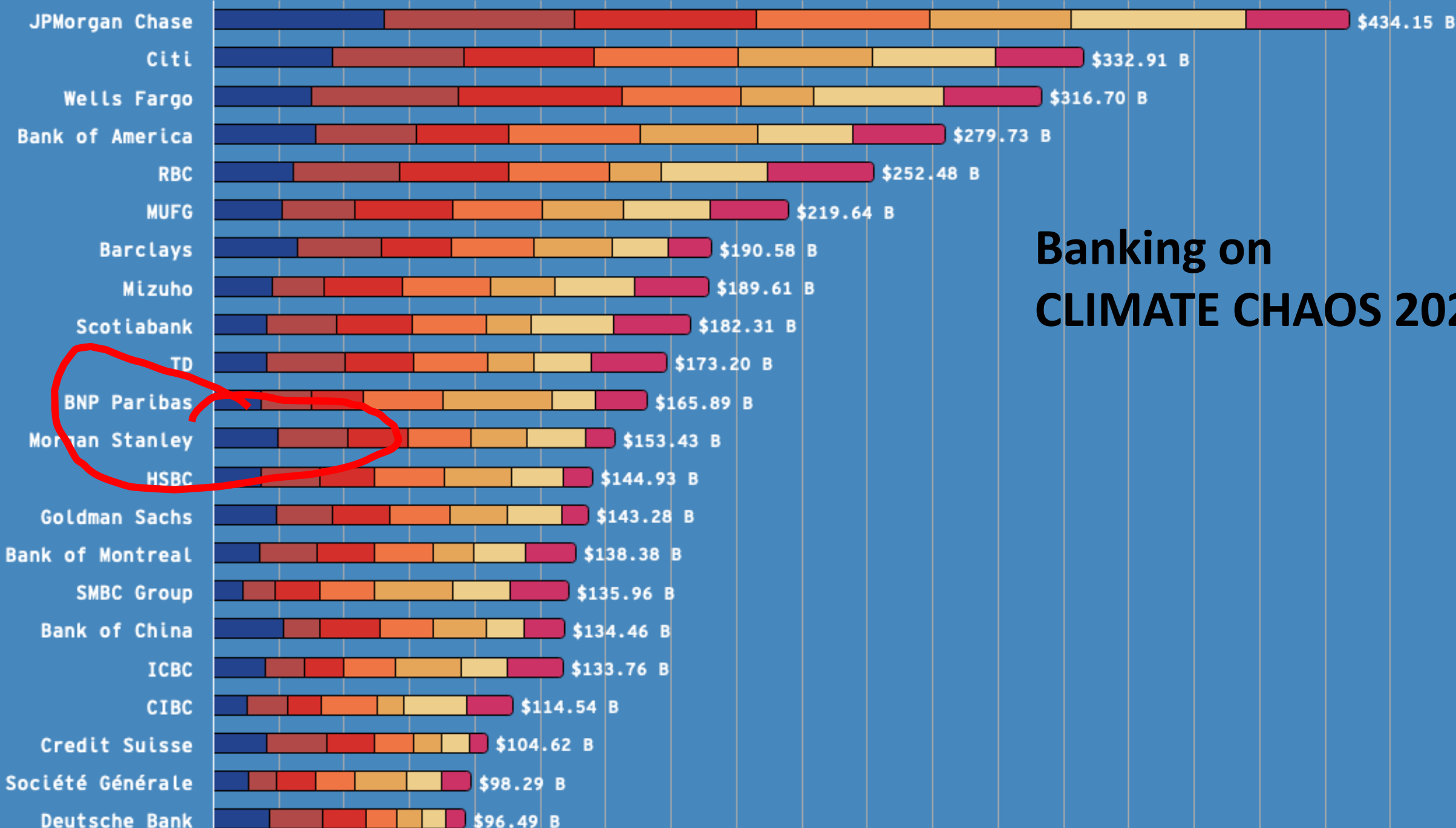
# Banking on CLIMATE CHAOS 2023

## The Dirty Dozen The Worst Banks Since the Paris Agreement

Top 12 banks financing fossil fuels globally, 2016-2022



\$0B \$25B \$50B \$75B \$100B \$125B \$150B \$175B \$200B \$225B \$250B \$275B \$300B \$325B \$350B \$375B \$400B \$425B \$450B \$4...



**Banking on  
CLIMATE CHAOS 2023**

Bank	2022 FF Rank	2016 Actual	2017 Actual	2018 Actual	2019 Actual	2020 Actual	2021 Actual	2022 Actual
JPMorgan Chase	2	\$65,357	\$72,817	\$69,365	\$66,134	\$53,983	\$67,258	\$39,240
Citi	5	\$45,691	\$50,239	\$49,734	\$54,721	\$51,635	\$46,945	\$33,943
Wells Fargo	3	\$37,581	\$55,955	\$62,524	\$45,533	\$27,954	\$49,755	\$37,399
Bank of America	4	\$39,157	\$38,399	\$35,148	\$50,188	\$45,454	\$35,916	\$35,467
RBC	1	\$30,525	\$40,522	\$41,960	\$38,215	\$20,195	\$40,437	\$40,626
MUFG	6	\$26,255	\$27,662	\$37,747	\$34,235	\$30,752	\$33,475	\$29,515
Barclays	16	\$31,846	\$32,098	\$26,857	\$31,440	\$30,322	\$21,437	\$16,578
Mizuho	9	\$22,239	\$19,925	\$29,826	\$34,083	\$24,628	\$30,082	\$28,830
Scotiabank	7	\$20,590	\$26,393	\$29,231	\$27,881	\$17,083	\$31,666	\$29,469
TD	8	\$20,546	\$29,943	\$26,246	\$28,175	\$17,598	\$21,691	\$29,002
BNP Paribas	12	\$18,302	\$19,297	\$19,693	\$30,258	\$41,781	\$16,522	\$20,037
Morgan Stanley	21	\$24,808	\$26,503	\$22,995	\$23,954	\$21,705	\$22,368	\$11,096
HSBC	22	\$17,973	\$22,450	\$20,929	\$27,004	\$25,727	\$19,777	\$11,074
Goldman Sachs	24	\$23,888	\$21,547	\$22,076	\$22,948	\$21,716	\$21,141	\$9,960
Bank of Montreal	13	\$17,753	\$21,989	\$21,909	\$22,387	\$15,416	\$19,617	\$19,310
SMBC Group	10	\$11,135	\$12,452	\$17,087	\$20,603	\$30,400	\$21,686	\$22,599
Bank of China	17	\$26,815	\$13,941	\$22,765	\$20,689	\$19,966	\$14,704	\$15,578
ICBC	11	\$19,841	\$14,956	\$14,778	\$19,735	\$25,284	\$17,504	\$21,659
CIBC	14	\$12,758	\$15,443	\$12,852	\$21,443	\$10,188	\$23,982	\$17,872
Credit Suisse	33	\$20,162	\$23,215	\$17,982	\$15,340	\$10,485	\$10,782	\$6,658
Société Générale	20	\$13,233	\$10,638	\$15,236	\$14,919	\$19,620	\$13,494	\$11,146
Deutsche Bank	31	\$21,156	\$20,392	\$16,786	\$11,895	\$9,442	\$9,342	\$7,472
Crédit Agricole	19	\$9,123	\$11,570	\$13,604	\$12,497	\$19,614	\$10,965	\$11,659
Agricultural Bank of China	23	\$11,857	\$5,785	\$7,597	\$11,995	\$15,137	\$17,687	\$10,591
Industrial Bank	25	\$8,804	\$8,429	\$12,631	\$12,192	\$14,218	\$14,931	\$9,200
China Construction Bank	27	\$15,261	\$9,305	\$9,667	\$14,248	\$12,461	\$9,833	\$9,184
China CITIC Bank	15	\$8,097	\$6,181	\$9,362	\$10,891	\$10,631	\$12,861	\$16,909
ING	36	\$9,163	\$8,655	\$12,107	\$9,069	\$6,578	\$10,971	\$5,156
Shanghai Pudong Developr	30	\$6,900	\$5,622	\$7,756	\$8,531	\$12,325	\$9,333	\$7,579
China Merchants Bank	28	\$9,440	\$3,996	\$7,828	\$6,691	\$8,304	\$11,661	\$9,124
BPCE/Natixis	38	\$5,640	\$6,234	\$12,134	\$7,885	\$6,235	\$8,707	\$4,731
Santander	34	\$6,644	\$5,107	\$5,010	\$9,458	\$10,243	\$8,065	\$6,640
China Everbright Bank	32	\$5,478	\$4,609	\$4,866	\$4,970	\$11,522	\$10,158	\$7,233
US Bancorp	29	\$3,471	\$6,273	\$6,323	\$4,461	\$7,959	\$9,894	\$8,793
PNC	18	\$2,731	\$4,954	\$8,005	\$5,982	\$5,075	\$7,108	\$12,606
Standard Chartered	37	\$2,782	\$5,421	\$10,246	\$8,384	\$7,087	\$7,124	\$5,111
UBS	42	\$8,135	\$9,661	\$11,434	\$6,326	\$2,550	\$4,195	\$2,843
Bank of Communications	26	\$4,659	\$3,693	\$5,169	\$5,621	\$7,146	\$9,665	\$9,190
UniCredit	35	\$6,211	\$6,519	\$5,038	\$5,527	\$8,883	\$4,895	\$5,729
Ping An Insurance Group	39	\$3,259	\$4,689	\$7,784	\$5,222	\$8,712	\$9,213	\$3,779
China Minsheng Bank	46	\$2,037	\$965	\$2,782	\$10,215	\$10,687	\$2,369	\$1,888

# Banking on CLIMATE CHAOS 2023

Ranked by Investment Size



Bank	2022 FF Rank	2016 Actual	2017 Actual	2018 Actual	2019 Actual	2020 Actual	2021 Actual	2022 Actual	2017 Target	2018 Target	2019 Target	2020 Target	2021 Target	2022 Target	2023 Target	2024 Target	2025 Target	2026 Target	2027 Target	2028 Target	2029 Target	2030 Target
JPMorgan Chase	2	\$65,357	\$72,817	\$69,365	\$66,134	\$53,983	\$67,258	\$39,240	\$60,688	\$56,020	\$51,352	\$46,683	\$42,015	\$37,347	\$32,678	\$28,010	\$23,342	\$18,673	\$14,005	\$9,337	\$4,668	\$0
Citi	5	\$45,691	\$50,239	\$49,734	\$54,721	\$51,635	\$46,945	\$33,943	\$42,427	\$39,164	\$35,900	\$32,636	\$29,373	\$26,109	\$22,846	\$19,582	\$16,318	\$13,055	\$9,791	\$6,527	\$3,264	\$0
Wells Fargo	3	\$37,581	\$55,955	\$62,524	\$45,533	\$27,954	\$49,755	\$37,399	\$34,897	\$32,212	\$29,528	\$26,844	\$24,159	\$21,475	\$18,790	\$16,106	\$13,422	\$10,737	\$8,053	\$5,369	\$2,684	\$0
Bank of America	4	\$39,157	\$38,399	\$35,148	\$50,188	\$45,454	\$35,916	\$35,467	\$36,360	\$33,563	\$30,766	\$27,969	\$25,172	\$22,375	\$19,578	\$16,781	\$13,985	\$11,188	\$8,391	\$5,594	\$2,797	\$0
RBC	1	\$30,525	\$40,522	\$41,960	\$38,215	\$20,195	\$40,437	\$40,626	\$28,344	\$26,164	\$23,984	\$21,803	\$19,623	\$17,443	\$15,262	\$13,082	\$10,902	\$8,721	\$6,541	\$4,361	\$2,180	\$0
MUFG	6	\$26,255	\$27,662	\$37,747	\$34,235	\$30,752	\$33,475	\$29,515	\$24,380	\$22,504	\$20,629	\$18,754	\$16,878	\$15,003	\$13,128	\$11,252	\$9,377	\$7,501	\$5,626	\$3,751	\$1,875	\$0
Barclays	16	\$31,846	\$32,098	\$26,857	\$31,440	\$30,322	\$21,437	\$16,578	\$29,572	\$27,297	\$25,022	\$22,747	\$20,473	\$18,198	\$15,923	\$13,648	\$11,374	\$9,099	\$6,824	\$4,549	\$2,275	\$0
Mizuho	9	\$22,239	\$19,925	\$29,826	\$34,083	\$24,628	\$30,082	\$28,830	\$20,651	\$19,062	\$17,474	\$15,885	\$14,297	\$12,708	\$11,120	\$9,531	\$7,943	\$6,354	\$4,766	\$3,177	\$1,589	\$0
Scotiabank	7	\$20,590	\$26,393	\$29,231	\$27,881	\$17,083	\$31,666	\$29,469	\$19,120	\$17,649	\$16,178	\$14,707	\$13,237	\$11,766	\$10,295	\$8,824	\$7,354	\$5,883	\$4,412	\$2,941	\$1,471	\$0
TD	8	\$20,546	\$29,943	\$26,246	\$28,175	\$17,598	\$21,691	\$29,002	\$19,078	\$17,611	\$16,143	\$14,676	\$13,208	\$11,741	\$10,273	\$8,805	\$7,338	\$5,870	\$4,403	\$2,935	\$1,468	\$0
BNP Paribas	12	\$18,302	\$19,297	\$19,693	\$30,258	\$41,781	\$16,522	\$20,037	\$16,994	\$15,687	\$14,380	\$13,073	\$11,765	\$10,458	\$9,151	\$7,844	\$6,536	\$5,229	\$3,922	\$2,615	\$1,307	\$0
Morgan Stanley	21	\$24,808	\$26,503	\$22,995	\$23,954	\$21,705	\$22,368	\$11,096	\$23,036	\$21,264	\$19,492	\$17,720	\$15,948	\$14,176	\$12,404	\$10,632	\$8,860	\$7,088	\$5,316	\$3,544	\$1,772	\$0
HSBC	22	\$17,973	\$22,450	\$20,929	\$27,004	\$25,727	\$19,777	\$11,074	\$16,689	\$15,405	\$14,122	\$12,838	\$11,554	\$10,270	\$8,986	\$7,703	\$6,419	\$5,135	\$3,851	\$2,568	\$1,284	\$0
Goldman Sachs	24	\$23,888	\$21,547	\$22,076	\$22,948	\$21,716	\$21,141	\$9,960	\$22,182	\$20,476	\$18,769	\$17,063	\$15,357	\$13,650	\$11,944	\$10,238	\$8,531	\$6,825	\$5,119	\$3,413	\$1,706	\$0
Bank of Montreal	13	\$17,753	\$21,989	\$21,909	\$22,387	\$15,416	\$19,617	\$19,310	\$16,485	\$15,217	\$13,949	\$12,680	\$11,412	\$10,144	\$8,876	\$7,608	\$6,340	\$5,072	\$3,804	\$2,536	\$1,268	\$0
SMBC Group	10	\$11,135	\$12,452	\$17,087	\$20,603	\$30,400	\$21,686	\$22,599	\$10,340	\$9,545	\$8,749	\$7,954	\$7,158	\$6,363	\$5,568	\$4,772	\$3,977	\$3,182	\$2,386	\$1,591	\$795	\$0
Bank of China	17	\$26,815	\$13,941	\$22,765	\$20,689	\$19,966	\$14,704	\$15,578	\$24,900	\$22,985	\$21,069	\$19,154	\$17,238	\$15,323	\$13,408	\$11,492	\$9,577	\$7,662	\$5,746	\$3,831	\$1,915	\$0
ICBC	11	\$19,841	\$14,956	\$14,778	\$19,735	\$25,284	\$17,504	\$21,659	\$18,424	\$17,007	\$15,590	\$14,172	\$12,755	\$11,338	\$9,921	\$8,503	\$7,086	\$5,669	\$4,252	\$2,834	\$1,417	\$0
CIBC	14	\$12,758	\$15,443	\$12,852	\$21,443	\$10,188	\$23,982	\$17,872	\$11,847	\$10,935	\$10,024	\$9,113	\$8,202	\$7,290	\$6,379	\$5,468	\$4,556	\$3,645	\$2,734	\$1,823	\$911	\$0
Credit Suisse	33	\$20,162	\$23,215	\$17,982	\$15,340	\$10,485	\$10,782	\$6,658	\$18,722	\$17,282	\$15,841	\$14,401	\$12,961	\$11,521	\$10,081	\$8,641	\$7,201	\$5,761	\$4,320	\$2,880	\$1,440	\$0
Société Générale	20	\$13,233	\$10,638	\$15,236	\$14,919	\$19,620	\$13,494	\$11,146	\$12,288	\$11,343	\$10,398	\$9,452	\$8,507	\$7,562	\$6,617	\$5,671	\$4,726	\$3,781	\$2,836	\$1,890	\$945	\$0
Deutsche Bank	31	\$21,156	\$20,392	\$16,786	\$11,895	\$9,442	\$9,342	\$7,472	\$19,644	\$18,133	\$16,622	\$15,111	\$13,600	\$12,089	\$10,578	\$9,067	\$7,556	\$6,044	\$4,533	\$3,022	\$1,511	\$0
Crédit Agricole	19	\$9,123	\$11,570	\$13,604	\$12,497	\$19,614	\$10,965	\$11,659	\$8,471	\$7,819	\$7,168	\$6,516	\$5,865	\$5,213	\$4,561	\$3,910	\$3,258	\$2,606	\$1,955	\$1,303	\$652	\$0
Agricultural Bank of China	23	\$11,857	\$5,785	\$7,597	\$11,995	\$15,137	\$17,687	\$10,591	\$11,010	\$10,163	\$9,316	\$8,469	\$7,622	\$6,776	\$5,929	\$5,082	\$4,235	\$3,388	\$2,541	\$1,694	\$847	\$0
Industrial Bank	25	\$8,804	\$8,429	\$12,631	\$12,192	\$14,218	\$14,931	\$9,200	\$8,175	\$7,546	\$6,918	\$6,289	\$5,660	\$5,031	\$4,402	\$3,773	\$3,144	\$2,515	\$1,887	\$1,258	\$629	\$0
China Construction Bank	27	\$15,261	\$9,305	\$9,667	\$14,248	\$12,461	\$9,833	\$9,184	\$14,171	\$13,081	\$11,991	\$10,901	\$9,811	\$8,721	\$7,631	\$6,541	\$5,451	\$4,360	\$3,270	\$2,180	\$1,090	\$0
China CITIC Bank	15	\$8,097	\$6,181	\$9,362	\$10,891	\$10,631	\$12,861	\$16,909	\$7,519	\$6,940	\$6,362	\$5,784	\$5,205	\$4,627	\$4,049	\$3,470	\$2,892	\$2,313	\$1,735	\$1,157	\$578	\$0
ING	36	\$9,163	\$8,655	\$12,107	\$9,069	\$6,578	\$10,971	\$5,156	\$8,509	\$7,854	\$7,200	\$6,545	\$5,891	\$5,236	\$4,582	\$3,927	\$3,273	\$2,618	\$1,964	\$1,309	\$655	\$0
Shanghai Pudong Developr	30	\$6,900	\$5,622	\$7,756	\$8,531	\$12,325	\$9,333	\$7,579	\$6,407	\$5,914	\$5,421	\$4,929	\$4,436	\$3,943	\$3,450	\$2,957	\$2,464	\$1,971	\$1,479	\$986	\$493	\$0
China Merchants Bank	28	\$9,440	\$3,996	\$7,828	\$6,691	\$8,304	\$11,661	\$9,124	\$8,765	\$8,091	\$7,417	\$6,743	\$6,068	\$5,394	\$4,720	\$4,046	\$3,371	\$2,697	\$2,023	\$1,349	\$674	\$0
BPCE/Natixis	38	\$5,640	\$6,234	\$12,134	\$7,885	\$6,235	\$8,707	\$4,731	\$5,237	\$4,835	\$4,432	\$4,029	\$3,626	\$3,223	\$2,820	\$2,417	\$2,014	\$1,612	\$1,209	\$806	\$403	\$0
Santander	34	\$6,644	\$5,107	\$5,010	\$9,458	\$10,243	\$8,065	\$6,640	\$6,170	\$5,695	\$5,221	\$4,746	\$4,271	\$3,797	\$3,322	\$2,848	\$2,373	\$1,898	\$1,424	\$949	\$475	\$0
China Everbright Bank	32	\$5,478	\$4,609	\$4,866	\$4,970	\$11,522	\$10,158	\$7,233	\$5,086	\$4,695	\$4,304	\$3,913	\$3,521	\$3,130	\$2,739	\$2,348	\$1,956	\$1,565	\$1,174	\$783	\$391	\$0
US Bancorp	29	\$3,471	\$6,273	\$6,323	\$4,461	\$7,959	\$9,894	\$8,793	\$3,223	\$2,975	\$2,727	\$2,479	\$2,231	\$1,983	\$1,735	\$1,487	\$1,240	\$992	\$744	\$496	\$248	\$0
PNC	18	\$2,731	\$4,954	\$8,005	\$5,982	\$5,075	\$7,108	\$12,606	\$2,536	\$2,341	\$2,146	\$1,950	\$1,755	\$1,560	\$1,365	\$1,170	\$975	\$780	\$585	\$390	\$195	\$0
Standard Chartered	37	\$2,782	\$5,421	\$10,246	\$8,384	\$7,087	\$7,124	\$5,111	\$2,584	\$2,385	\$2,186	\$1,987	\$1,789	\$1,590	\$1,391	\$1,192	\$994	\$795	\$596	\$397	\$199	\$0
UBS	42	\$8,135	\$9,661	\$11,434	\$6,326	\$2,550	\$4,195	\$2,843	\$7,554	\$6,973	\$6,392	\$5,811	\$5,230	\$4,648	\$4,067	\$3,486	\$2,905	\$2,324	\$1,743	\$1,162	\$581	\$0
Bank of Communications	26	\$4,659	\$3,693	\$5,169	\$5,621	\$7,146	\$9,665	\$9,190	\$4,326	\$3,994	\$3,661	\$3,328	\$2,995	\$2,662	\$2,330	\$1,997	\$1,664	\$1,331	\$998	\$666	\$333	\$0
UniCredit	35	\$6,211	\$6,519	\$5,038	\$5,527	\$8,883	\$4,895	\$5,729	\$5,768	\$5,324	\$4,880	\$4,437	\$3,993	\$3,549	\$3,106	\$2,662	\$2,218	\$1,775	\$1,331	\$887	\$444	\$0
Ping An Insurance Group	39	\$3,259	\$4,689	\$7,784	\$5,222	\$8,712	\$9,213	\$3,779	\$3,026	\$2,794	\$2,561	\$2,328	\$2,095	\$1,862	\$1,630	\$1,397	\$1,164	\$931	\$698	\$466	\$233	\$0
China Minsheng Bank	46	\$2,037	\$965	\$2,782	\$10,215	\$10,687	\$2,369	\$1,888	\$1,892	\$1,746	\$1,601	\$1,455	\$1,310	\$1,164	\$1,019	\$873	\$728	\$582	\$437	\$291	\$146	\$0



Bank	2022 FF Rank	2016 Actual	2017 Actual	2018 Actual	2019 Actual	2020 Actual	2021 Actual	2022 Actual	2017 Delta	2018 Delta	2019 Delta	2020 Delta	2021 Delta	2022 Delta
JPMorgan Chase	2	\$65,357	\$72,817	\$69,365	\$66,134	\$53,983	\$67,258	\$39,240	-\$12,129	-\$13,345	-\$14,782	-\$7,300	-\$25,243	-\$1,893
Citi	5	\$45,691	\$50,239	\$49,734	\$54,721	\$51,635	\$46,945	\$33,943	-\$7,811	-\$10,571	-\$18,821	-\$18,998	-\$17,572	-\$7,834
Wells Fargo	3	\$37,581	\$55,955	\$62,524	\$45,533	\$27,954	\$49,755	\$37,399	-\$21,058	-\$30,312	-\$16,005	-\$1,110	-\$25,596	-\$15,924
Bank of America	4	\$39,157	\$38,399	\$35,148	\$50,188	\$45,454	\$35,916	\$35,467	-\$2,039	-\$1,585	-\$19,422	-\$17,485	-\$10,744	-\$13,091
RBC	1	\$30,525	\$40,522	\$41,960	\$38,215	\$20,195	\$40,437	\$40,626	-\$12,178	-\$15,796	-\$14,232	\$1,609	-\$20,815	-\$23,184
MUFG	6	\$26,255	\$27,662	\$37,747	\$34,235	\$30,752	\$33,475	\$29,515	-\$3,283	-\$15,242	-\$13,606	-\$11,999	-\$16,597	-\$14,512
Barclays	16	\$31,846	\$32,098	\$26,857	\$31,440	\$30,322	\$21,437	\$16,578	-\$2,526	\$439	-\$6,418	-\$7,575	-\$965	\$1,619
Mizuho	9	\$22,239	\$19,925	\$29,826	\$34,083	\$24,628	\$30,082	\$28,830	\$726	-\$10,764	-\$16,609	-\$8,743	-\$15,785	-\$16,122
Scotiabank	7	\$20,590	\$26,393	\$29,231	\$27,881	\$17,083	\$31,666	\$29,469	-\$7,273	-\$11,582	-\$11,703	-\$2,376	-\$18,429	-\$17,703
TD	8	\$20,546	\$29,943	\$26,246	\$28,175	\$17,598	\$21,691	\$29,002	-\$10,865	-\$8,635	-\$12,031	-\$2,923	-\$8,483	-\$17,261
BNP Paribas	12	\$18,302	\$19,297	\$19,693	\$30,258	\$41,781	\$16,522	\$20,037	-\$2,303	-\$4,006	-\$15,878	-\$28,708	-\$4,757	-\$9,579
Morgan Stanley	21	\$24,808	\$26,503	\$22,995	\$23,954	\$21,705	\$22,368	\$11,096	-\$3,468	-\$1,731	-\$4,463	-\$3,985	-\$6,421	\$3,080
HSBC	22	\$17,973	\$22,450	\$20,929	\$27,004	\$25,727	\$19,777	\$11,074	-\$5,761	-\$5,523	-\$12,883	-\$12,889	-\$8,223	-\$804
Goldman Sachs	24	\$23,888	\$21,547	\$22,076	\$22,948	\$21,716	\$21,141	\$9,960	\$635	-\$1,601	-\$4,179	-\$4,653	-\$5,784	\$3,691
Bank of Montreal	13	\$17,753	\$21,989	\$21,909	\$22,387	\$15,416	\$19,617	\$19,310	-\$5,504	-\$6,692	-\$8,438	-\$2,736	-\$8,205	-\$9,165
SMBC Group	10	\$11,135	\$12,452	\$17,087	\$20,603	\$30,400	\$21,686	\$22,599	-\$2,112	-\$7,542	-\$11,854	-\$22,446	-\$14,528	-\$16,236
Bank of China	17	\$26,815	\$13,941	\$22,765	\$20,689	\$19,966	\$14,704	\$15,578	\$10,959	\$219	\$381	-\$813	\$2,535	-\$255
ICBC	11	\$19,841	\$14,956	\$14,778	\$19,735	\$25,284	\$17,504	\$21,659	\$3,468	\$2,229	-\$4,145	-\$11,112	-\$4,748	-\$10,321
CIBC	14	\$12,758	\$15,443	\$12,852	\$21,443	\$10,188	\$23,982	\$17,872	-\$3,597	-\$1,916	-\$11,419	-\$1,075	-\$15,780	-\$10,582
Credit Suisse	33	\$20,162	\$23,215	\$17,982	\$15,340	\$10,485	\$10,782	\$6,658	-\$4,493	-\$701	\$501	\$3,916	\$2,179	\$4,863
Société Générale	20	\$13,233	\$10,638	\$15,236	\$14,919	\$19,620	\$13,494	\$11,146	\$1,650	-\$3,893	-\$4,521	-\$10,167	-\$4,987	-\$3,584
Deutsche Bank	31	\$21,156	\$20,392	\$16,786	\$11,895	\$9,442	\$9,342	\$7,472	-\$748	\$1,347	\$4,727	\$5,669	\$4,258	\$4,617
Crédit Agricole	19	\$9,123	\$11,570	\$13,604	\$12,497	\$19,614	\$10,965	\$11,659	-\$3,099	-\$5,784	-\$5,329	-\$13,098	-\$5,100	-\$6,446
Agricultural Bank of China	23	\$11,857	\$5,785	\$7,597	\$11,995	\$15,137	\$17,687	\$10,591	\$5,226	\$2,566	-\$2,679	-\$6,668	-\$10,065	-\$3,815
Industrial Bank	25	\$8,804	\$8,429	\$12,631	\$12,192	\$14,218	\$14,931	\$9,200	-\$253	-\$5,084	-\$5,275	-\$7,929	-\$9,272	-\$4,169
China Construction Bank	27	\$15,261	\$9,305	\$9,667	\$14,248	\$12,461	\$9,833	\$9,184	\$4,866	\$3,414	-\$2,257	-\$1,560	-\$22	-\$464
China CITIC Bank	15	\$8,097	\$6,181	\$9,362	\$10,891	\$10,631	\$12,861	\$16,909	\$1,337	-\$2,422	-\$4,529	-\$4,847	-\$7,656	-\$12,282
ING	36	\$9,163	\$8,655	\$12,107	\$9,069	\$6,578	\$10,971	\$5,156	-\$146	-\$4,253	-\$1,869	-\$33	-\$5,080	\$80
Shanghai Pudong Developr	30	\$6,900	\$5,622	\$7,756	\$8,531	\$12,325	\$9,333	\$7,579	\$785	-\$1,842	-\$3,110	-\$7,396	-\$4,897	-\$3,637
China Merchants Bank	28	\$9,440	\$3,996	\$7,828	\$6,691	\$8,304	\$11,661	\$9,124	\$4,769	\$263	\$726	-\$1,562	-\$5,593	-\$3,730
BPCE/Natixis	38	\$5,640	\$6,234	\$12,134	\$7,885	\$6,235	\$8,707	\$4,731	-\$997	-\$7,300	-\$3,453	-\$2,206	-\$5,081	-\$1,508
Santander	34	\$6,644	\$5,107	\$5,010	\$9,458	\$10,243	\$8,065	\$6,640	\$1,063	\$685	-\$4,237	-\$5,498	-\$3,794	-\$2,843
Bank of China Everbright Bank	32	\$5,478	\$4,609	\$4,866	\$4,970	\$11,522	\$10,158	\$7,233	\$478	-\$170	-\$666	-\$7,609	-\$6,636	-\$4,102
US Bancorp	29	\$3,471	\$6,273	\$6,323	\$4,461	\$7,959	\$9,894	\$8,793	-\$3,050	-\$3,348	-\$1,734	-\$5,480	-\$7,662	-\$6,809
PNC	18	\$2,731	\$4,954	\$8,005	\$5,982	\$5,075	\$7,108	\$12,606	-\$2,419	-\$5,664	-\$3,836	-\$3,125	-\$5,353	-\$11,046
Standard Chartered	37	\$2,782	\$5,421	\$10,246	\$8,384	\$7,087	\$7,124	\$5,111	-\$2,838	-\$7,862	-\$6,198	-\$5,099	-\$5,335	-\$3,521
UBS	42	\$8,135	\$9,661	\$11,434	\$6,326	\$2,550	\$4,195	\$2,843	-\$2,107	-\$4,461	\$65	\$3,261	\$1,035	\$1,805
Bank of Communications	26	\$4,659	\$3,693	\$5,169	\$5,621	\$7,146	\$9,665	\$9,190	\$633	-\$1,175	-\$1,960	-\$3,818	-\$6,669	-\$6,528
UniCredit	35	\$6,211	\$6,519	\$5,038	\$5,527	\$8,883	\$4,895	\$5,729	-\$751	\$286	-\$647	-\$4,446	-\$902	-\$2,179
Ping An Insurance Group	39	\$3,259	\$4,689	\$7,784	\$5,222	\$8,712	\$9,213	\$3,779	-\$1,662	-\$4,991	-\$2,661	-\$6,384	-\$7,118	-\$1,917
China Minsheng Bank	46	\$2,037	\$965	\$2,782	\$10,215	\$10,687	\$2,369	\$1,888	\$927	-\$1,036	-\$8,614	-\$9,232	-\$1,060	-\$724

Banking on  
**CLIMATE CHAOS 2023**  
 Deviation from Target

Bank	2022 FF		2016	2017	2018	2019	2020	2021	2022	2017		2018	2019	2020	2021	2022
	Rank	Assets	Actual	Actual	Actual	Actual	Actual	Actual	Actual	Delta	Delta	Delta	Delta	Delta	Delta	Delta
JPMorgan Chase	2	\$3,743,570	1.75%	1.95%	1.85%	1.77%	1.44%	1.80%	1.05%	-0.32%	-0.36%	-0.39%	-0.20%	-0.67%	-0.05%	
Citi	5	\$2,291,410	1.99%	2.19%	2.17%	2.39%	2.25%	2.05%	1.48%	-0.34%	-0.46%	-0.82%	-0.83%	-0.77%	-0.34%	
Wells Fargo	3	\$1,948,070	1.93%	2.87%	3.21%	2.34%	1.43%	2.55%	1.92%	-1.08%	-1.56%	-0.82%	-0.06%	-1.31%	-0.82%	
Bank of America	4	\$3,169,500	1.24%	1.21%	1.11%	1.58%	1.43%	1.13%	1.12%	-0.06%	-0.05%	-0.61%	-0.55%	-0.34%	-0.41%	
RBC	1	\$1,376,790	2.22%	2.94%	3.05%	2.78%	1.47%	2.94%	2.95%	-0.88%	-1.15%	-1.03%	0.12%	-1.51%	-1.68%	
MUFG	6	\$3,176,840	0.83%	0.87%	1.19%	1.08%	0.97%	1.05%	0.93%	-0.10%	-0.48%	-0.43%	-0.38%	-0.52%	-0.46%	
Barclays	16	\$1,874,400	1.70%	1.71%	1.43%	1.68%	1.62%	1.14%	0.88%	-0.13%	0.02%	-0.34%	-0.40%	-0.05%	0.09%	
Mizuho	9	\$1,957,870	1.14%	1.02%	1.52%	1.74%	1.26%	1.54%	1.47%	0.04%	-0.55%	-0.85%	-0.45%	-0.81%	-0.82%	
Scotiabank	7	\$978,480	2.10%	2.70%	2.99%	2.85%	1.75%	3.24%	3.01%	-0.74%	-1.18%	-1.20%	-0.24%	-1.88%	-1.81%	
TD	8	\$1,486,400	1.38%	2.01%	1.77%	1.90%	1.18%	1.46%	1.95%	-0.73%	-0.58%	-0.81%	-0.20%	-0.57%	-1.16%	
BNP Paribas	12	\$2,905,830	0.63%	0.66%	0.68%	1.04%	1.44%	0.57%	0.69%	-0.08%	-0.14%	-0.55%	-0.99%	-0.16%	-0.33%	
Morgan Stanley	21	\$1,188,140	2.09%	2.23%	1.94%	2.02%	1.83%	1.88%	0.93%	-0.29%	-0.15%	-0.38%	-0.34%	-0.54%	0.26%	
HSBC	22	\$2,953,640	0.61%	0.76%	0.71%	0.91%	0.87%	0.67%	0.37%	-0.20%	-0.19%	-0.44%	-0.44%	-0.28%	-0.03%	
Goldman Sachs	24	\$1,463,990	1.63%	1.47%	1.51%	1.57%	1.48%	1.44%	0.68%	0.04%	-0.11%	-0.29%	-0.32%	-0.40%	0.25%	
Bank of Montreal	13	\$908,620	1.95%	2.42%	2.41%	2.46%	1.70%	2.16%	2.13%	-0.61%	-0.74%	-0.93%	-0.30%	-0.90%	-1.01%	
SMBC Group	10	\$2,176,940	0.51%	0.57%	0.78%	0.95%	1.40%	1.00%	1.04%	-0.10%	-0.35%	-0.54%	-1.03%	-0.67%	-0.75%	
Bank of China	17	\$4,206,530	0.64%	0.33%	0.54%	0.49%	0.47%	0.35%	0.37%	0.26%	0.01%	0.01%	-0.02%	0.06%	-0.01%	
ICBC	11	\$5,536,530	0.36%	0.27%	0.27%	0.36%	0.46%	0.32%	0.39%	0.06%	0.04%	-0.07%	-0.20%	-0.09%	-0.19%	
CIBC	14	\$676,950	1.88%	2.28%	1.90%	3.17%	1.51%	3.54%	2.64%	-0.53%	-0.28%	-1.69%	-0.16%	-2.33%	-1.56%	
Credit Suisse	33	\$829,120	2.43%	2.80%	2.17%	1.85%	1.26%	1.30%	0.80%	-0.54%	-0.08%	0.06%	0.47%	0.26%	0.59%	
Société Générale	20	\$1,665,470	0.79%	0.64%	0.91%	0.90%	1.18%	0.81%	0.67%	0.10%	-0.23%	-0.27%	-0.61%	-0.30%	-0.22%	
Deutsche Bank	31	\$1,505,740	1.40%	1.35%	1.11%	0.79%	0.63%	0.62%	0.50%	-0.05%	0.09%	0.31%	0.38%	0.28%	0.31%	
Crédit Agricole	19	\$2,674,350	0.34%	0.43%	0.51%	0.47%	0.73%	0.41%	0.44%	-0.12%	-0.22%	-0.20%	-0.49%	-0.19%	-0.24%	
Agricultural Bank of China	23	\$4,575,950	0.26%	0.13%	0.17%	0.26%	0.33%	0.39%	0.23%	0.11%	0.06%	-0.06%	-0.15%	-0.22%	-0.08%	
Industrial Bank	25	\$1,354,250	0.65%	0.62%	0.93%	0.90%	1.05%	1.10%	0.68%	-0.02%	-0.38%	-0.39%	-0.59%	-0.68%	-0.31%	
China Construction Bank	27	\$4,762,460	0.32%	0.20%	0.20%	0.30%	0.26%	0.21%	0.19%	0.10%	0.07%	-0.05%	-0.03%	0.00%	-0.01%	
China CITIC Bank	15	\$1,266,080	0.64%	0.49%	0.74%	0.86%	0.84%	1.02%	1.34%	0.11%	-0.19%	-0.36%	-0.38%	-0.60%	-0.97%	
ING	36	\$1,081,870	0.85%	0.80%	1.12%	0.84%	0.61%	1.01%	0.48%	-0.01%	-0.39%	-0.17%	0.00%	-0.47%	0.01%	
Shanghai Pudong Developr	30	\$1,251,380	0.55%	0.45%	0.62%	0.68%	0.98%	0.75%	0.61%	0.06%	-0.15%	-0.25%	-0.59%	-0.39%	-0.29%	
China Merchants Bank	28	\$1,455,940	0.65%	0.27%	0.54%	0.46%	0.57%	0.80%	0.63%	0.33%	0.02%	0.05%	-0.11%	-0.38%	-0.26%	
BPCE/Natixis	38	\$1,724,120	0.33%	0.36%	0.70%	0.46%	0.36%	0.51%	0.27%	-0.06%	-0.42%	-0.20%	-0.13%	-0.29%	-0.09%	
Santander	34	\$1,814,900	0.37%	0.28%	0.28%	0.52%	0.56%	0.44%	0.37%	0.06%	0.04%	-0.23%	-0.30%	-0.21%	-0.16%	
China Everbright Bank	32	\$929,080	0.59%	0.50%	0.52%	0.53%	1.24%	1.09%	0.78%	0.05%	-0.02%	-0.07%	-0.82%	-0.71%	-0.44%	
US Bancorp	29	\$573,280	0.61%	1.09%	1.10%	0.78%	1.39%	1.73%	1.53%	-0.53%	-0.58%	-0.30%	-0.96%	-1.34%	-1.19%	
PNC	18	\$557,190	0.49%	0.89%	1.44%	1.07%	0.91%	1.28%	2.26%	-0.43%	-1.02%	-0.69%	-0.56%	-0.96%	-1.98%	
Standard Chartered	37	\$827,820	0.34%	0.65%	1.24%	1.01%	0.86%	0.86%	0.62%	-0.34%	-0.95%	-0.75%	-0.62%	-0.64%	-0.43%	
UBS	42	\$1,117,180	0.73%	0.86%	1.02%	0.57%	0.23%	0.38%	0.25%	-0.19%	-0.40%	0.01%	0.29%	0.09%	0.16%	
Bank of Communications	26	\$1,836,380	0.25%	0.20%	0.28%	0.31%	0.39%	0.53%	0.50%	0.03%	-0.06%	-0.11%	-0.21%	-0.36%	-0.36%	
UniCredit	35	\$1,042,500	0.60%	0.63%	0.48%	0.53%	0.85%	0.47%	0.55%	-0.07%	0.03%	-0.06%	-0.43%	-0.09%	-0.21%	
Ping An Insurance Group	39	\$774,700	0.42%	0.61%	1.00%	0.67%	1.12%	1.19%	0.49%	-0.21%	-0.64%	-0.34%	-0.82%	-0.92%	-0.25%	
China Minsheng Bank	46	\$1,094,480	0.19%	0.09%	0.25%	0.93%	0.98%	0.22%	0.17%	0.08%	-0.09%	-0.79%	-0.84%	-0.10%	-0.07%	

# Banking on CLIMATE CHAOS 2023

Deviation by Intensity



# THE BANKING ON OUR FUTURE PLEDGE

- “If Chase, Citibank, Wells Fargo, and Bank of America continue to fund climate-destroying fossil fuel projects, I pledge to close my account and cut up my credit card.”
- “If I don’t bank at these institutions now, I pledge I won’t do so in the future.”

Sign up at:  
[thirdact.org/act/bank-on-our-future-pledge/](https://thirdact.org/act/bank-on-our-future-pledge/)





# COSTCO CREDIT CARD

- **Powerful Client of Citi:**
  - Costco is a huge client of Citi's; 3rd largest retailer in US
  - Credit cards are very profitable
- **Organizing & Movement Building:**
  - 1 in 3 Americans shop at Costco
  - Teamsters represent some Costco workers
- **Policy Leverage:**
  - Costco climate policies already include "Scope 3" emissions
  - Opportunity to integrate "financed emissions"
- **Brand Affinity & Alignment:**
  - Costco responsive to its paying members
  - "Do the right thing" motto
  - Friendly & creative brand-jamming
- **Ask Costco to Pressure Citi or Switch to Better Card**



WHAT DID YOU DO TO FIGHT CLIMATE CHANGE?

THIS! Is What We Did

**STOP THE MONEY PIPELINE**







**TH!RD ACT FAITH**





- Divesting from the rest of the Energy Sector
- Divesting / Investing at the Presbytery / Congregational Level
- Moving our Money / Engaging our Banks
- Declaring that continued support of fossil fuel investments is incompatible with the mission and goals of the church



# RESOURCES

- ThirdAct: <https://thirdact.org/>
  - ThirdActFaith: <https://thirdact.org/working-groups/faith/>
  - Banking on our Future: <https://thirdact.org/act/bank-on-our-future-pledge/>
- THIS Is What We Did: <https://thisiswhatwedid.org/>
- Stop the Money Pipeline: <https://stopthemoneypipeline.com/>
- GreenFaith: <https://greenfaith.org>
- Banking on Climate Chaos: <https://www.bankingonclimatechaos.org/>
- Bank Rank Spreadsheet:  
[https://docs.google.com/spreadsheets/d/1d03T\\_iv-Z\\_JZbkJ3p0VBYZxGiUeL2V9ZBhNVGNiIC\\_c/edit?usp=sharing](https://docs.google.com/spreadsheets/d/1d03T_iv-Z_JZbkJ3p0VBYZxGiUeL2V9ZBhNVGNiIC_c/edit?usp=sharing)





## **Recommendation**

The Presbytery of \_\_\_\_\_ overtures the 226th General Assembly (2024) of the Presbyterian Church (U.S.A.) to declare that continued support of the exploration, development, funding, and consumption of fossil fuels is incompatible with the mission and goals of the church. To do so violates the equitable welfare of God's people and our charge to care for creation and its more than human inhabitants across the globe.